



EasyVR

How to Interface EasyVR to a PC

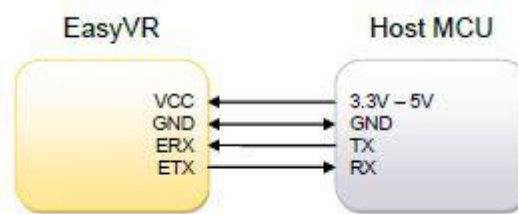


Table of Contents

How to interface EasyVR to a PC.....	3
Converting the signals.....	3
4D Systems - 4D Programming Cable	3
Debug Port Interface (Acme systems).....	3
MAX232 Board (Mikroelektronika).....	3
USB UART 2 Board (Mikroelektronika)	3
Some Examples how to connect.....	4
How to check the windows settings	5
How to train EasyVR	6

How to interface EasyVR to a PC

Communication with the EasyVR module uses a standard UART interface compatible with 3.3-5V TTL/CMOS logical levels, according to the powering voltage VCC.
A typical connection to an MCU-based host:



The initial configuration at power on is **9600 baud, 8 bit data, No parity, 1 bit stop**. The baud rate can be changed later to operate in the range 9600 - 115200 baud.

The Host Microcontroller (MCU) will be in this case your Computer. It is the HOST which means this is the primary transmitting device (Tx) controlling the unit. The Information sent to the EasyVR needs to be read at the Receive Pin (Rx or ERX). If the EasyVR sends a reply to the host it will do that on its very own Transmitting Pin (Tx or ETX). The Host expects this information on its Receive Pin (Rx).

NOTE:

EasyVR ETX MUST be connected on the Hosts Rx ETX → Rx
 EasyVR ERX MUST be connected on the Hosts Tx ERX → Tx

Converting the signals

You will need a Converter to interface directly. The most common ones are RS232 to TTL and USB to TTL Converter. For examples:

4D Systems - 4D Programming Cable

<http://www.tigal.com/product/2116>



Debug Port Interface (Acme systems)

<http://www.tigal.com/product/1846>



MAX232 Board (Mikroelektronika)

<http://www.tigal.com/product/1245>



USB UART 2 Board (Mikroelektronika)

<http://www.tigal.com/product/2131>



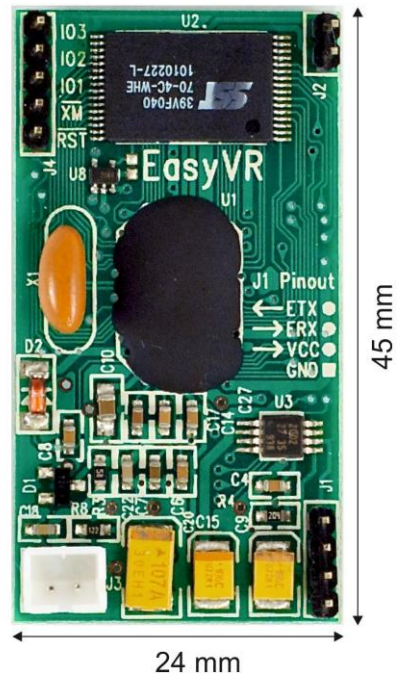
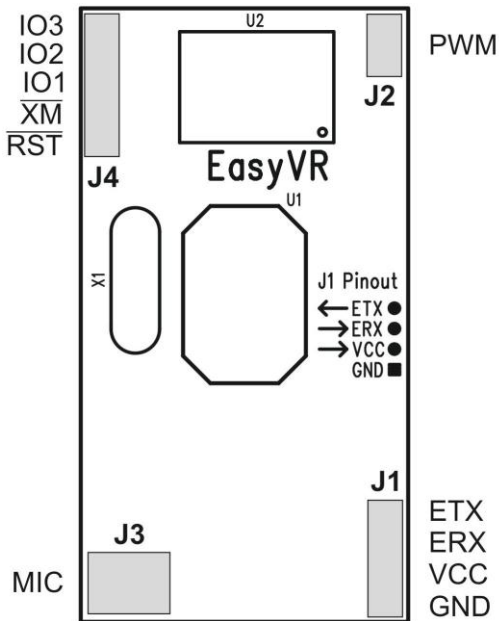
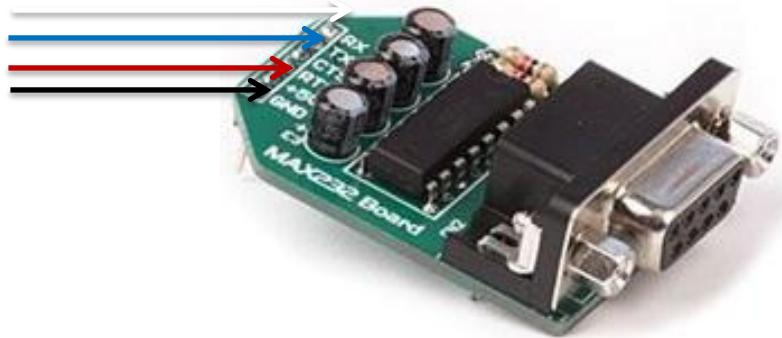
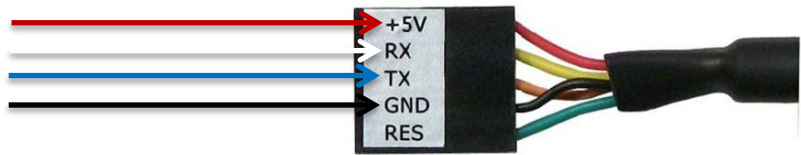
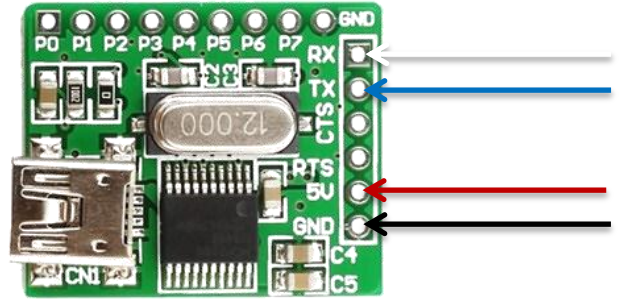
Some Examples how to connect

SS





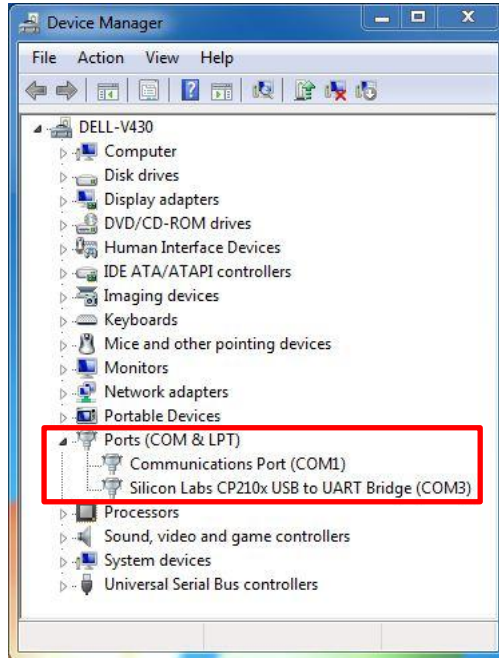
EasyVR

ETX = white
 ERX = blue
 VCC = red
 GND = black

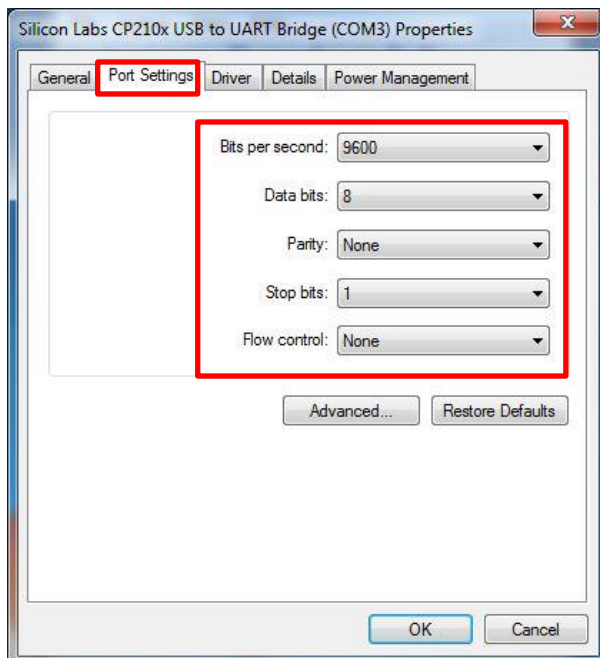


How to check the windows settings

1. Open the Device Manager (press  & )



2. Expand the section "Ports (COM&LPT)"
3. Right Click on your Converter and select "Properties"
4. Click on "Port Settings"



How to train EasyVR

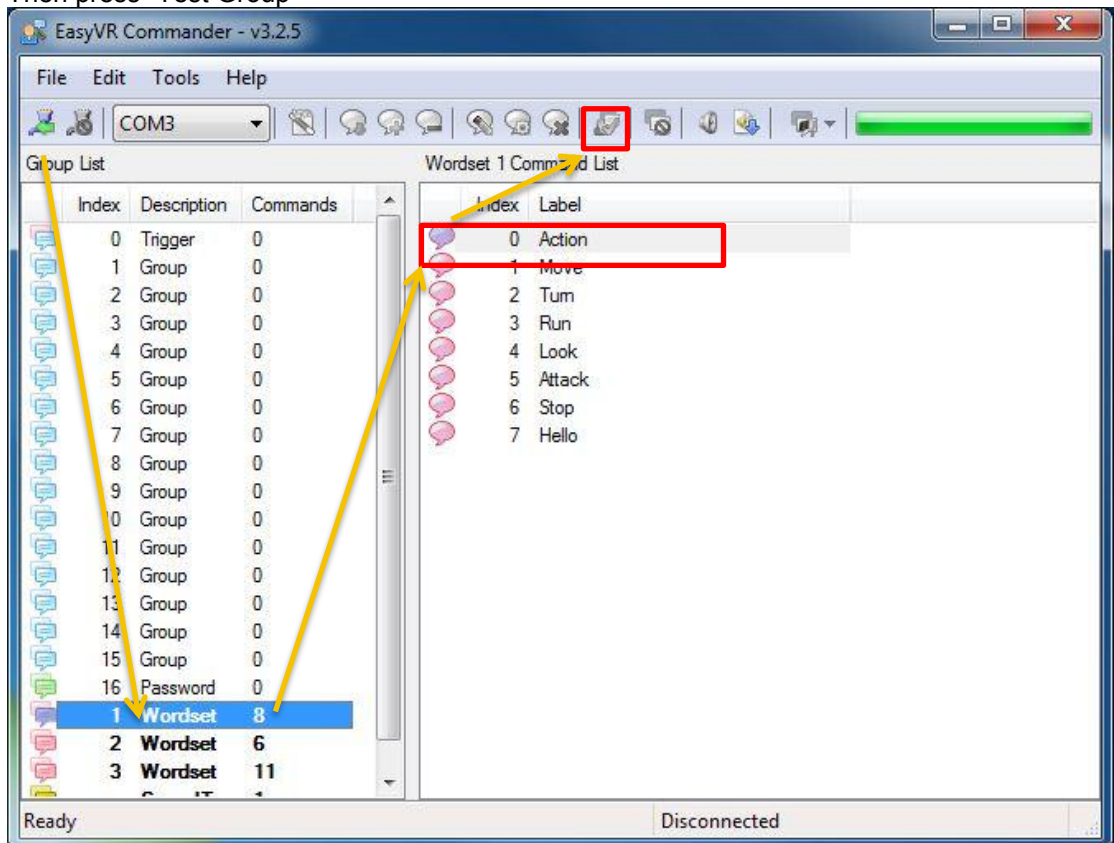
1. Please start your installed EasyVR Commander
2. Click on the COM Port Combobox and select COM-Port configured in previous step



3. Click on "Connect"



4. Start testing your EasyVR through selecting a "wordset" and a command from the list. Then press "Test Group"



5. Once you are finished training and setting a command list click on "Generate Code..." save the *.pde, load it in Arduino IDE or extract code from file.



6. For further Information please acquire the EasyVR User Manual http://download.tigal.com/veear/EasyVR_User_Manual_3.3.pdf

Veear © TIGAL KG, all right reserved.



All Veear branded boards and software are manufactured by TIGAL KG. Made in Austria.

TIGAL KG assumes no responsibility for any errors, which may appear in this manual. Furthermore, TIGAL KG reserves the right to alter the hardware, software, and/or specifications detailed herein at any time without notice, and does not make any commitment to update the information contained herein. TIGAL KG products are not authorized for use as critical components in life support devices or systems.